

# ASSEMBLING YOUR CANVAS FLOATER FRAME

## HARDWARE INCLUDED:

- 4 threaded plates with  
2 screws inserted
- 4 backing plates
- 12 screws
- 2 wire hangers with screws inserted
- 2 wall protectors

## MATERIALS NEEDED:

- Flat-blade screwdriver



*Pick a frame bottom*

## 1. PICK THE FRAME BOTTOM

Begin by selecting the frame section that will be the bottom of your frame. Set the front of the frame face down on your work-space. Place two angled plates (one with screws, one without) together into the hardware track at each end of the bottom section. The screw heads should face outward. Fasten the plates by gently tightening the screws in the hardware track.

**Important Note: Do NOT fully tighten any screws until Step Three when frame is completed.**



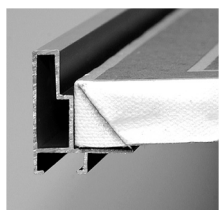
*Attach the sides*

## 2. ATTACH THE SIDES

Choose one of the side sections and slide it onto the plates that you attached to the frame bottom in Step One. Align the mitered ends and tighten the screws just enough to hold the frame sections together. Repeat this step with the other side section.

## 3. ADD THE TOP

Insert the corners plates into each end of the remaining frame section (the frame top) as you did with the frame bottom in Step One. Attach the top section to the sides to complete the frame. Align the mitered ends, and tighten all screws in the corner plates.



*Secure your artwork*

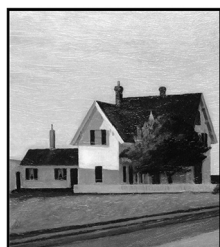
## 4. INSERT & SECURE YOUR ARTWORK

Lay the frame on a flat surface and insert your canvas artwork. Attach the artwork to the frame by inserting screws into the pre-drilled screw holes and into the wood of the stretched canvas. Do not completely tighten all screws.

**Important Note: Make sure your stretcher bars are at least as thick as the screws we provided. If not, you will need to purchase other screws.**

## 5. TIGHTEN IT UP

Readjust your artwork making sure it is square in the frame and tighten all screws firmly.



*Display your art!*

## 6. ADD THE FINISHING TOUCHES

Position one hanger into the hardware track at each side of the frame. Hanger is positioned correctly if the canvas stretcher is visible through its hole and both hangers are in line with each other. Tighten the screws. Loop wire between the hangers, twisting it at the ends. Adhere wall protectors to the bottom corners of the frame where the frame contacts the wall.

**Mitered corners can be sharp. Use of gloves while handling is recommended.**

**800.537.0944**

M-F, 8:30 a.m. - 5:30 p.m. EST  
AmericanFrame.com



**AMERICAN FRAME**

Stylish Frames, Beautiful Prints, Exceptional Savings. It's the perfect fit.